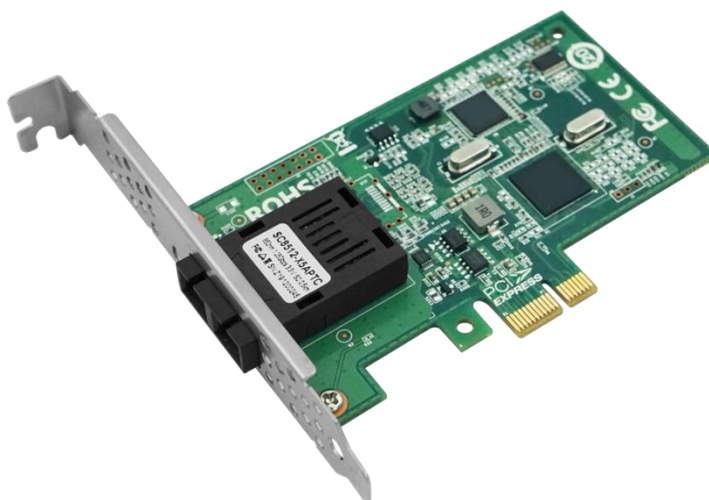


## LRES2026PF

- PCIe2.1 x1 Single-port Gigabit SC Multi-mode Ethernet Network Adapter
- (Net-swift WX1860A2 Based)

### Overview



LRES2026PF is a PCI Express v2.1 x1 single-port Gigabit Multi-mode Ethernet network adapter developed by Shenzhen Lianrui Electronics Co., Ltd. based on the Net-swift WX1860A2 main controller solution. It is also compatible with PCIe X4, X8 and X16 as well as PCIe V1.1.

Shenzhen Lianrui Electronics Co., Ltd. launched the Ethernet fiber network card (LRES2026PF) with independent intellectual property rights, with a fully integrated gigabit Ethernet media access control (MAC) module. It is widely used in optical fiber to desktop network communication, and can also be used in PC server, embedded network equipment and so on.

The master controller used in the optical fiber network card has Chinese independent intellectual property rights and independent control, which is of great significance for breaking the monopoly of some manufacturers and ensuring information security.

The controller used in LRES2026PF is a master control product based on the Net-swift WX1860A2 main controller solution, with independent control. Including data transmission, data network bandwidth, average transmission delay, actual packet transmission rate and other indicators reached the industry level.

## Key Features

- Net-swift WX1860A2 main controller;
- PCIe v2.1 x1 single-port fiber Gigabit Ethernet network adapter (850nm);
- Widely used in fiber-to-desktop network communication, and can also be used on PC servers, embedded and other network devices;
- In terms of data transmission, data network bandwidth, average transmission delay, actual packet transmission rate and other indicators, it has reached the industry level.

## Specifications

Controller	Net-swift WX1860A2
Baffle Height	Full height and half height
Power Consumption	2.5W
System Support	Windows 7/8/8.1/10/11
	Windows Server 2008 R2/2012 R2/2016 R2/2019 /R2;
	Linux SLES 11/12
	CentOS / RHEL 6.6 ~ 7.4
	Ubuntu 14.04/16.04/16.10
	PHYTIUM platform, Kylin
	Sunway platform : Deepin/ Neokylin
	Loongson platform : Neokylin /loongnix
	Linx-tech V6.0.80
iKuai 3.6.4	
Bus Type	PCIe x1
Data rate per port	1000MbE
Connector	1*SC

## Technical Features

Standards compliant	IEEE802.3z 1000BASE-X Gbit/s Ethernet IEEE 802.3x Full Duplex and flow control IEEE 802.3ad Link aggregation for parallel links IEEE 802.1Q VLAN IEEE 1588 IEEE 802.3az - Energy Efficient Ethernet (EEE)
iSCSI	YES
WoL	No
Jumbo Frames	YES
DPDK	Yes
PXE	Yes
FCoE	No

## Environment Features

Operating Temperature	0 °C to 55 °C (-13 °F to 158 °F)
Storage Temperature	-40 °C to 70 °C (-40 °F to 158 °F)
Storage Humidity	Maximum: 90% non-condensing relative humidity at 35 °C

## Physical Features

Size(mm)	111.5*120*21
Weight(g)	*

## LED Indicators

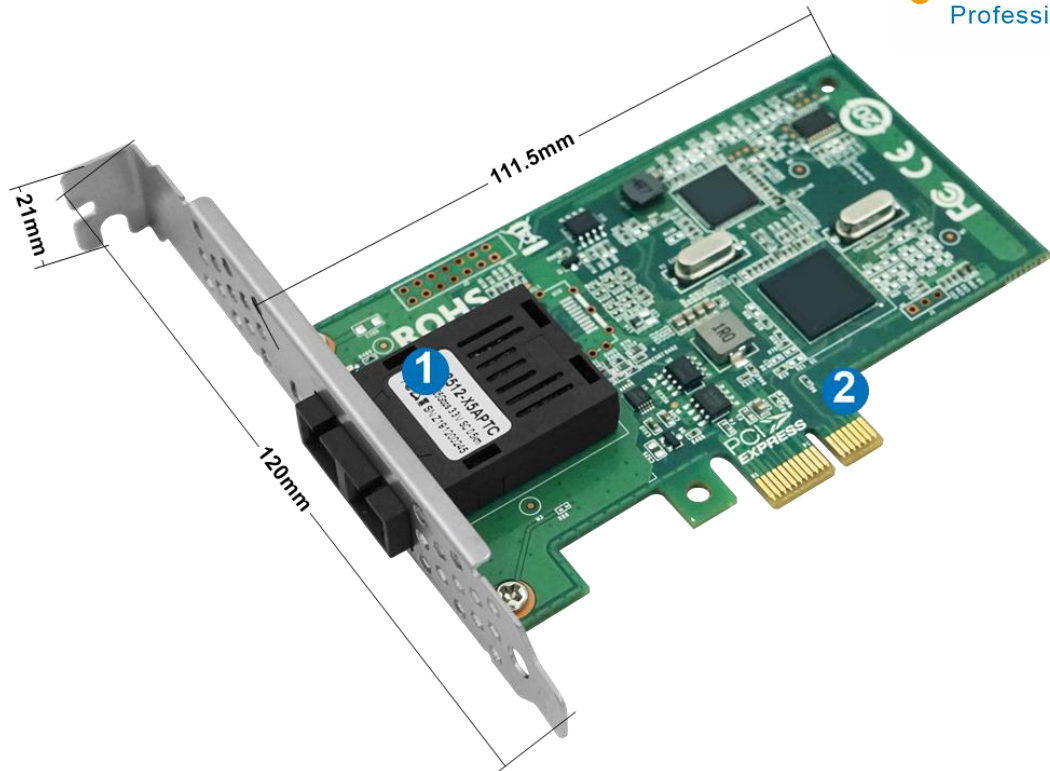
LED Indicators	Yellow Link + Green Blink
----------------	---------------------------

## Order Information

P/N	Description
LRES2026PF	PCIe2.1 x1 Single-port Gigabit SC Multi-mode Ethernet Network Adapter (Net-swift WX1860A2 Based)

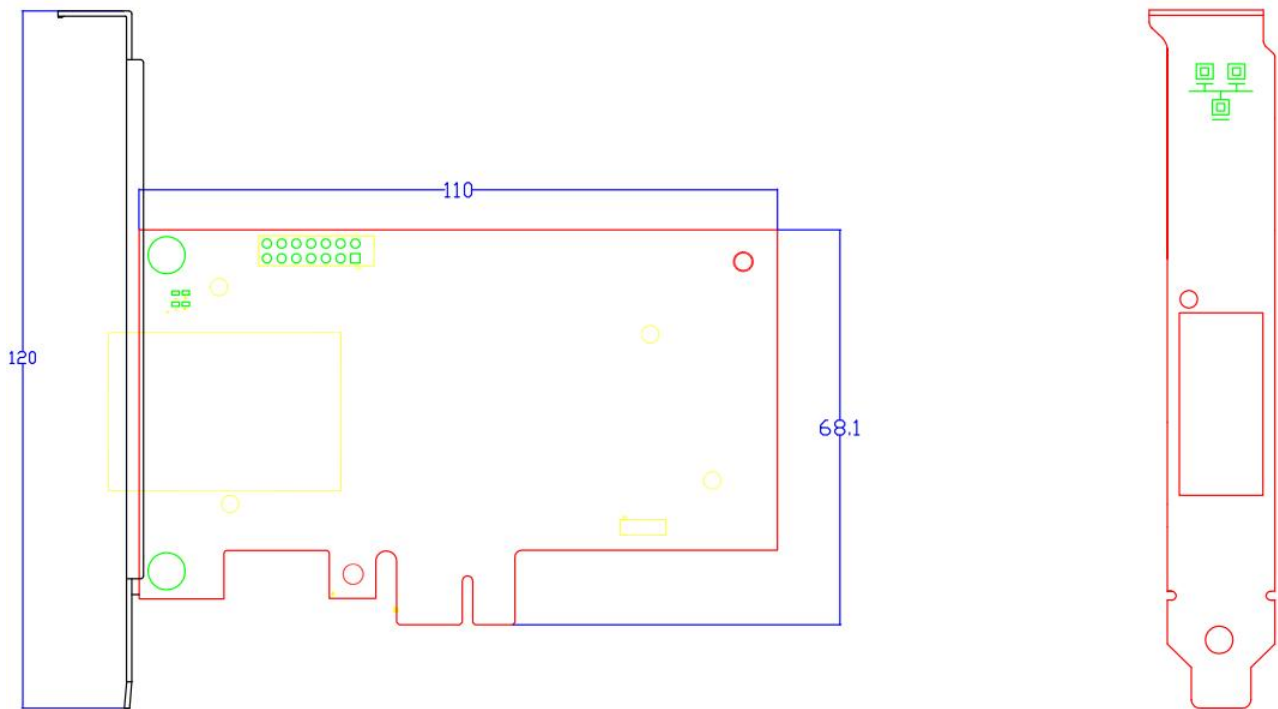
PS: Above details are only for reference, if there is any change, no prior notice.

## Product Structure



- 1. 1\*1G SC 850nm Connector
- 3. PCIe v2.1 x1 Bus

PS: The above data are measured by hand. If there is any error within 0.5-1mm, please understand. Above details are only for reference, if there is any change, no prior notice.



PS: Above details are only for reference, if there is any change, no prior notice.

## Companion Products

### Fiber NIC

- § LR-LINK PCI 100FX Desktop Adapter
- § LR-LINK PCIe 100FX Desktop Adapter
- § LR-LINK PCI 1000BASE-SX/LX Desktop Adapter
- § LR-LINK PCIe 1000BASE-SX/LX Desktop Adapter
- § LR-LINK PCIe 1000BASE-SX/LX Server Adapter
- § LR-LINK PCIe 10GBASE-SX/LX Server Adapter
- § LR-LINK PCIe 25GBASE-SX/LX Server Adapter
- § LR-LINK PCIe 40GBASE-SX/LX Server Adapter
- § LR-LINK PCIe 100GBASE-SX/LX Server Adapter

### Copper NIC

- § LR-LINK PCI 10/100Mbps Desktop Adapter
- § LR-LINK PCIe 10/100Mbps Desktop Adapter
- § LR-LINK PCI 10/100/1000Mbps Desktop Adapter
- § LR-LINK PCIe 10/100/1000Mbps Desktop Adapter
- § LR-LINK PCIe 10/100/1000Mbps Server Adapter
- § LR-LINK PCIe 100/1G/10Gbps Server Adapter
- § LR-LINK PCIe 1G/2.5G/5G/10Gbps Server Adapter

## Download Drivers

To get the drivers, please visit us at <http://www.lr-link.com/support/driver.html>.

## Product Quick Guide

To know the network card basic knowledge to choose the suitable NIC you need, please visit us at: <http://www.lr-link.com/productchoose.html>.

## Customer Support

LR-LINK customer Support Services offers a broad selection of programs including phone support and warranty service. For more information, contact us at Service and availability. <http://www.lr-link.com/contactus.html>

## Shenzhen Lianrui Electronic Co.,LTD

Shenzhen Lianrui Electronics Co.,Ltd is an efficient Ethernet adapter design company with independent research and development,using Intel,Net-swift,Tehuite,Broadcom,Realtek and other manufacturers Ethernet controller, developed by our company's independent R & D design team,manufacturedby our company workshop, and then sell.

## Declaration

Our products specifications come from modifying the chip manufacturer's specifications released. Product features, technical parameters, technology right, intellectualproperty rights and brand names etc.mentioned in specifications are just referenced only.There is no infringement meaning.If there is any important and sensitive content related, please contact our Lianrui company, we'll delete them, Thank you.

SHENZHEN LIANRUI ELECTRONICS CON.,LTD

ADD:C4 Bldg.,Xintang Industry Zone,Baishixia FuyongTown,Baoan District Shenzhen China

Tel:+86(0)755-33671531 33671533 Fax:+86(0)755-29082065

Product Sales [lrlink@lr-link.com](mailto:lrlink@lr-link.com)

Technical Support [support@lr-link.com](mailto:support@lr-link.com)

WEB [www.lr-link.com](http://www.lr-link.com)

**LR-LINK**<sup>®</sup>  
Professional Ethernet Solutions Supplier

Copyright © Shenzhen Lianrui Electronics CO.,LTD,2006-2021. All rights reserved