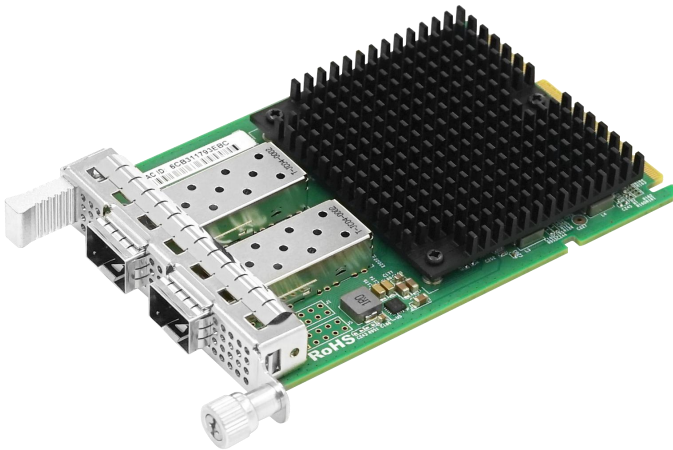


LRES3029PF-OCP

OCP3.0 Dual-port 25G Ethernet Network Adapter V2

(Intel E810 Based)



Key Features:

- PCI Express 4.0 x8;
- Dynamic Device Personalization (DDP) ;
- Supports both RDMA iWARP and RoCEv2;
- Equipped with Dual-port 25G SFP28 interfaces, supporting 1/10/25Gbps data transfer rate;
- Support device hot swapping (requires motherboard support);
- Support SMBus temperature monitoring;

Overview

LRES3029PF-OCP is an OCP3.0 Dual-port 25G Ethernet Network Adapter independently developed by Linkreal Co., Ltd. based on the Intel E810 main control solution. This product is based on the Intel E810 main control solution, designed with OCP 3.0 SFF structure, and has dual port fiber optic 25G Ethernet connection capability. LRES3029PF-OCP supports multiple speeds of 1/10/25G, which can meet the network bandwidth and performance requirements of different servers, ensuring the efficiency and stability of data transmission. In terms of functional features, LRES3029PF-OCP supports two advanced network functions, RDMA iWARP and RoCEv2, which are particularly important in server environments and can significantly reduce network latency, improve throughput, and optimize performance in high-performance application scenarios such as cloud computing and big data analysis. With its outstanding performance and stability, LRES3029PF-OCP has become an ideal choice for modern data centers and servers, providing reliable network support for various high-performance computing and storage applications.

Specifications

Model	LRES3029PF-OCP
Controller	Intel E810
Cable medium	optical fiber
Fiber Type	25GBASE-SR、25GBASE-LR、25GBASE-Cu 10GBASE-SR、10GBASE-LR、10GBASE-Cu 1GBASE-SR、1GBASE-LR、1GBASE-Cu
Bracket Height	SFF
Min Power(w)	6.828W
Max Power(w)	10.02W
Connector	2*25G SFP28
Bus Type	PCIe4.0 (16GT/s) x8
ESD(Contact discharge)	8KV
Data rate per port	1G/10/25Gbps
Power Supply	OCP
Protocol Support	IEEE 802.3by-2016 25GBASE-X Ethernet IEEE 802.3ae 10GBASE-X Ethernet IEEE 802.3z 1000BASE-X Ethernet IEEE 802.3ap IEEE 802.3ad IEEE 802.1Q IEEE 802.1Qaz IEEE 802.1Qbb IEEE 802.1Qbg IEEE 1588 PTP IEEE 802.3az - Energy Efficient Ethernet
Firmware version	V4.6
PXE/UEFI	Yes
NCSI	Yes
RDMA	Yes
WoL	No
SR-IOV	Yes
1588 PTP	Yes
ScanChain	Yes
FRU read and write	Yes
SMBus Monitoring Temperature	Yes
Jumbo Frames	9.2KB

System Support	<ul style="list-style-type: none"> * Windows 10/ 11 * Windows Server 2016/2019 * Windows Server 2022 * Deepin 20/20.6/20.9 * VMware ESXi 6.7/7.0/8.0 * RHEL/CentOS 7.6/7.9 * RHEL/Centos 8.2/8.3/9.0 * Ubuntu 16.04.3/18.04.5 * Ubuntu 20.04.3/22.04.2 * Ubuntu 24.04 * SUSE 15.4 * openEuler 24.03 	<ul style="list-style-type: none"> * Debian-12.5.0 * FreeBSD 12.2/13.2 * FusionOS-22.0.6/23.0.6 * Galaxy Unicorn v10 * NeoKylin 7.6 * OpenKylin 0.7.5 * NewStartOS 5.0.5/3.2.2 * UOS 20 * Zhongke Fangde server operating system5.0 * iKuai router
----------------	---	--

LED Indicators

1/10Gbps	Connection Status	Orange Link
	Transfer status	Orange Link+Green Blink
25Gbps	Connection Status	Green Link
	Transfer status	Green Link+Green Blink

Environment Features

Operating Temperature	0°C to 65°C (32 °F to 149 °F)
Storage Temperature	-40 °C to 70 °C (-40 °F to 158 °F)
Storage Humidity	Maximum: 90% non-condensing relative humidity at 35 °C
Certification	FCC, CE, RoHS

Physical properties

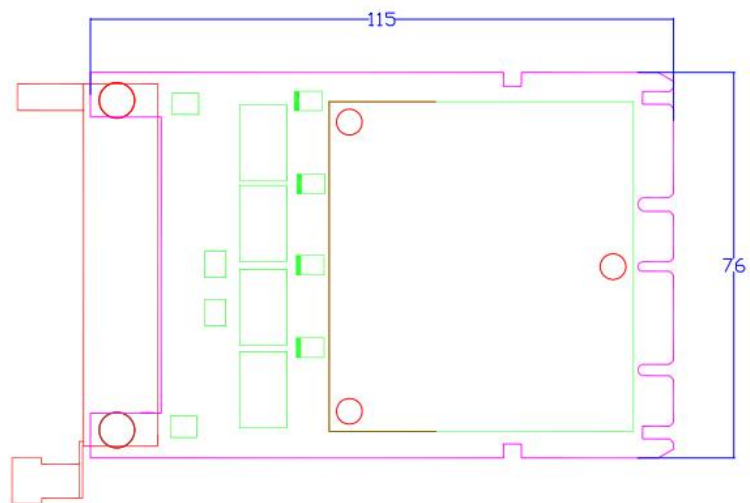
PCB size(unit:mm)	115*76*1.6
Package size (unit: mm)	179*150*30

Packing List

Bracket	Default SFF baffle installation
Internet Network Adapter	*1
Product Warranty Card	*1
Packaging	Carton + Anti-static bag

PS: The depictions provided of our products are not to scale and are intended for illustrative purposes only.

Dimensions(unit:mm)



Linkreal Co., Ltd.

14F T10 Bldg., Sino-Ocean New World, Longcheng Street, Longgang District Shenzhen China 518172

☎ (+86)755-84507909
✉ service@lr-link.com
🌐 www.lr-link.com

