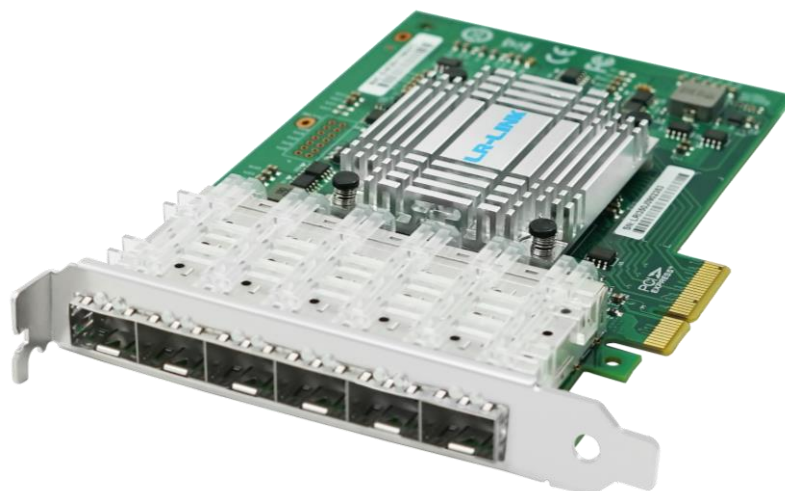


LRES1006PF-6SFP

-- PCIe x4 Six-port 1G SFP Ethernet Network Adapter (Intel I350 Based)

Overview



LRES1006PF-6SFP is a PCI Express x4 six-port 1G SFP ethernet network adapter independently developed by Shenzhen Lianrui Electronics Co., Ltd. based on the Intel I350 main control solution; this adapter card can be aggregated into groups to achieve fault tolerance , Automatically detect and realize the communication from the faulty port to other members of the same group to continue running to achieve uninterrupted communication. The adapter card has integrated hardware acceleration functions and can perform TCP / UDP / IP checksum offloading and TCP segmentation tasks. The host processing technology can offload the accelerator and free up the CPU resources to free up more CPU resources to process other applications. The adapter card is an ideal solution for deploying multiple networks and deploying critical network applications and environments on high-performance servers.

LRES1006PF-6SFP This adapter card is used in the Gigabit Ethernet connection of the optical network. The dedicated PCI Express input and output (I / O) bandwidth is equipped to ensure its superior performance, while not occupying the bus bandwidth. There are 4 SFP slots on board, which are compatible with various Gigabit SFP modules. Users can choose the Gigabit fiber module used according to the actual transmission distance without replacing the network card. This adapter card supports PCI-SIG and SR-IOV.

LRES1006PF-6SFP This adapter card is suitable for Gigabit fiber Ethernet, has excellent noise immunity, and also supports long-distance fiber connection. The adapter card supports Intel PRO smart installation and a new Intel PROSet designed for Microsoft Device Manager, which simplifies the installation and management process. The Intel PROSet program simplifies the adapter installation process.

Key Features

- Six Gigabit SFP Ethernet network adapters.
- This adapter card can be aggregated into groups.
- The adapter card can perform TCP / UDP / IP checksum sharing and TCP segmentation tasks.
- Onboard is equipped with 6 SFP slots, compatible with a variety of Gigabit SFP modules.

Specifications

Controller	Intel I350
Baffle Height	Full height
Fiber Type	1000MBase-SX、1000MBase-LX、1000MBase-Cu
Power Consumption	9.8W
System Support	Windows XP/Vista/8/8.1/10
	Windows Server 2003 R2/2008 R2/2012 R2/2016 R2/2019 R2
	CentOS / RHEL 6.x/7.x or later
	Ubuntu 14.x or later
	Linux Kernel 4.x/5.x or later
VMware ESXi 4.x/5.x/6.x or later	
Bus Type	PCI Express v2.1 (2.5GT/s & 5.0GT/s) x4; compatible x8 x16
Data Rate per Port	1000MbE
Connector	6*SFP

Technical Features

Standards Compliant	IEEE802.3z 1000BASE-X Gbit/s Ethernet IEEE 802.3x Full Duplex and flow control IEEE 802.3ad Link aggregation for parallel links IEEE 802.1Q VLAN IEEE 1588 IEEE 802.3az - Energy Efficient Ethernet (EEE)
RDMA(RoCE, iWARP)	No
iSCSI	No
WoL	No
Jumbo Frames	Yes
DPDK	Yes
PXE	Yes
FCoE	No
VMDq、SR-IOV	Yes
IPsec	Yes

Environment Features

Operating Temperature	0 °C to 55 °C (-13 °F to 158 °F)
Storage Temperature	-40 °C to 70 °C (-40 °F to 158 °F)
Storage Humidity	Maximum: 90% non-condensing relative humidity at 35 °C

Physical Features

Size (mm)	156.55*120*21
Weight (g)	*

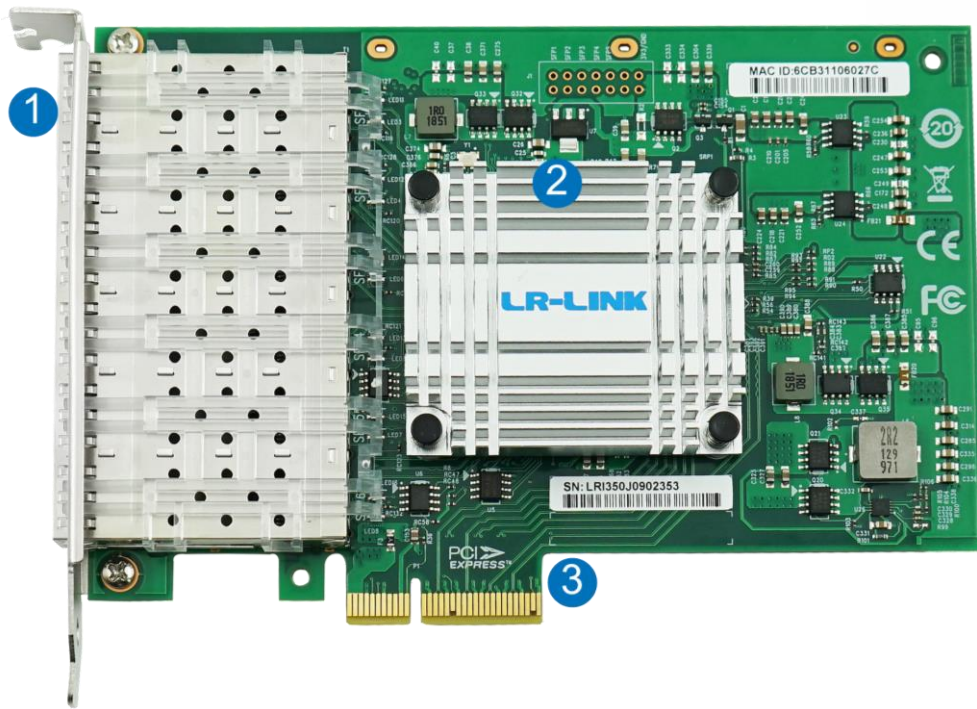
LED Indicators

LED Indicators	Yellow Link + Green Blink
----------------	---------------------------

Order Information

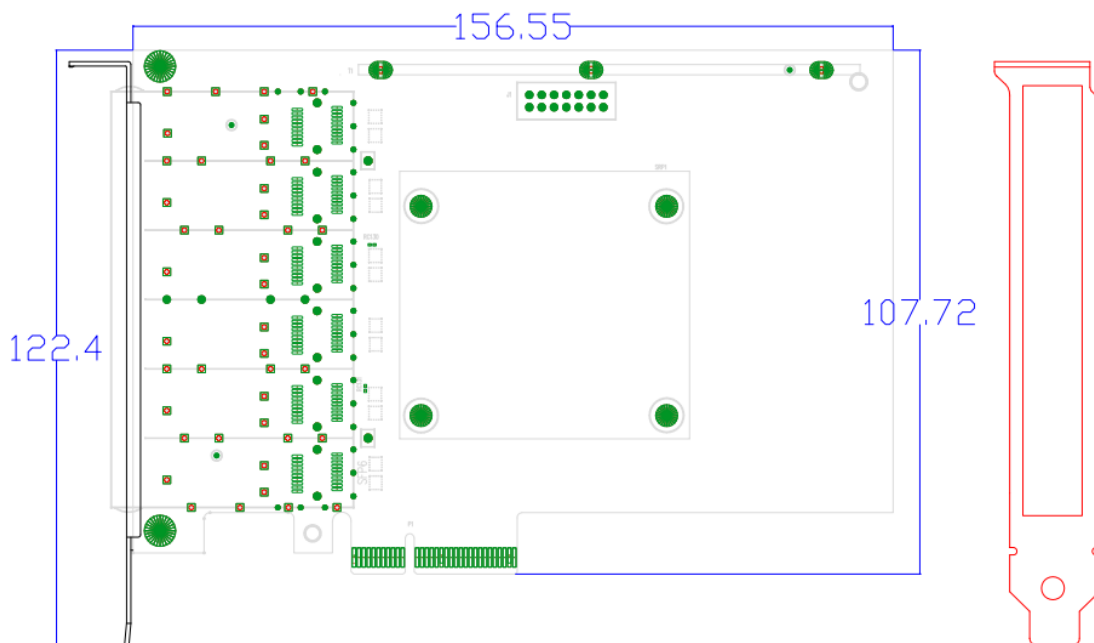
P/N	Description
LRES1006PF-6SFP	PCIe x4 Six-port 1G SFP Ethernet Network Adapter (Intel I350 Based)

PS: Above details are only for reference, if there is any change, no prior notice.



1. 6*1G SFP Connector
2. Heat Sink
3. PCIe x8 Bus

PS: Above details are only for reference, if there is any change, no prior notice.



PS: Above details are only for reference, if there is any change, no prior notice.

Companion Products

Fiber NIC

- § LR-LINK PCI 100FX Desktop Adapter
- § LR-LINK PCIe 100FX Desktop Adapter
- § LR-LINK PCI 1000BASE-SX/LX Desktop Adapter
- § LR-LINK PCIe 1000BASE-SX/LX Desktop Adapter
- § LR-LINK PCIe 1000BASE-SX/LX Server Adapter
- § LR-LINK PCIe 10GBASE-SX/LX Server Adapter
- § LR-LINK PCIe 25GBASE-SX/LX Server Adapter
- § LR-LINK PCIe 40GBASE-SX/LX Server Adapter
- § LR-LINK PCIe 100GBASE-SX/LX Server Adapter

Copper NIC

- § LR-LINK PCI 10/100Mbps Desktop Adapter
- § LR-LINK PCIe 10/100Mbps Desktop Adapter
- § LR-LINK PCI 10/100/1000Mbps Desktop Adapter
- § LR-LINK PCIe 10/100/1000Mbps Desktop Adapter
- § LR-LINK PCIe 10/100/1000Mbps Server Adapter
- § LR-LINK PCIe 100/1G/10Gbps Server Adapter
- § LR-LINK PCIe 1G/2.5G/5G/10Gbps Server Adapter

Download Drivers

To get the drivers, please visit us at <http://www.lr-link.com/support/driver.html>.

Product Quick Guide

To know the network card basic knowledge to choose the suitable NIC you need, please visit us at: <http://www.lr-link.com/productchoose.html>.

Customer Support

LR-LINK customer Support Services offers a broad selection of programs including phone support and warranty service. For more information, contact us at Service and availability. <http://www.lr-link.com/contactus.html>

Shenzhen Lianrui Electronics Co.,LTD.

Shenzhen Lianrui Electronics Co.,Ltd is an efficient Ethernet adapter design company with independent research and development,using Intel,Net-swift,Tehuite,Broadcom,Realtek and other manufacturers Ethernet controller, developed by our company's independent R & D design team,manufacturedby our company workshop, and then sell.

Declaration

Our products specifications come from modifying the chip manufacturer's specifications released. Product features, technical parameters, technology right, intellectualproperty rights and brand names etc.mentioned in specifications are just referenced only.There is no infringement meaning.If there is any important andsensitive content related, please contact our Lianrui company, we'll delete them, Thank you.

SHENZHEN LIANRUI ELECTRONICS CON.,LTD.

ADD:C4 Bldg.,Xintang Industry Zone,Baishixia FuyongTown,Baoan District Shenzhen China

Tel:+86(0)755-33671531 33671533 Fax:+86(0)755-29082065

Product Sales sales@lr-link.com

Technical Support support@lr-link.com

WEB www.lr-link.com



Copyright © Shenzhen Lianrui Electronics CO.,LTD,2006-2020. All rights reserved